



ZTC640 PC Interface

Many thanks for purchasing the ZTC640. We have put together this CD to help you get going with the product as quickly and painlessly as possible. There are two folders on this CD.

ZTC640 Drivers – contains the drivers that are required.

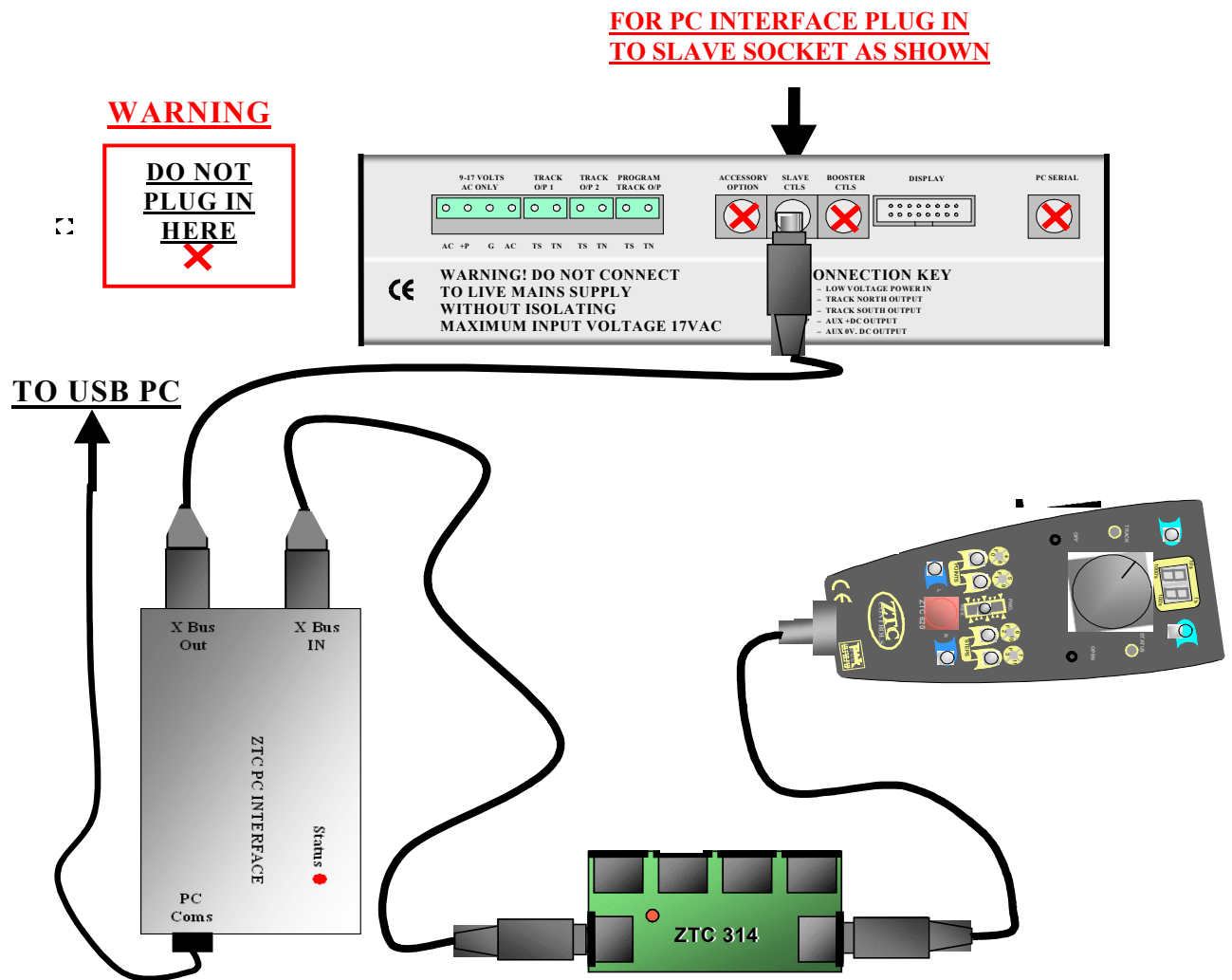
3rd Party Software – We have worked closely with <http://www.kamind.com> to develop a tried and trusted software package that should enable you to quickly take control of your train layout from a PC. In this directory is a trial version of their software for you to have a play with. If you like the package you can upgrade to the full version. See <http://www.kamind.com> for details on how to upgrade or get in touch with ZTC for more information.

Getting started

Okay, start by reading through this guide. It may be a little tedious but it is important that you do.

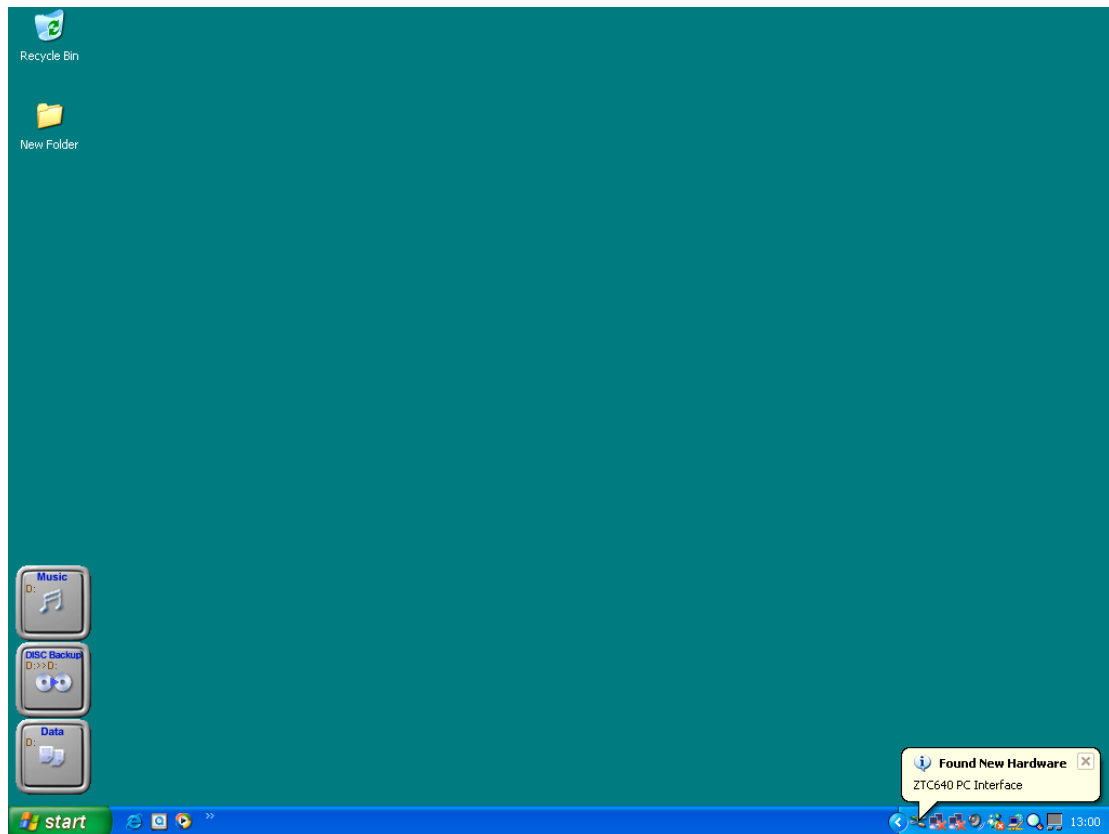
Follow this guide to install the ZTC640

Finally install the trial version of software and read the documentation for this software. It is quite a powerful application suite and we really do impress the importance in reading the documentation. You will struggle to do anything useful without reading the documentation.

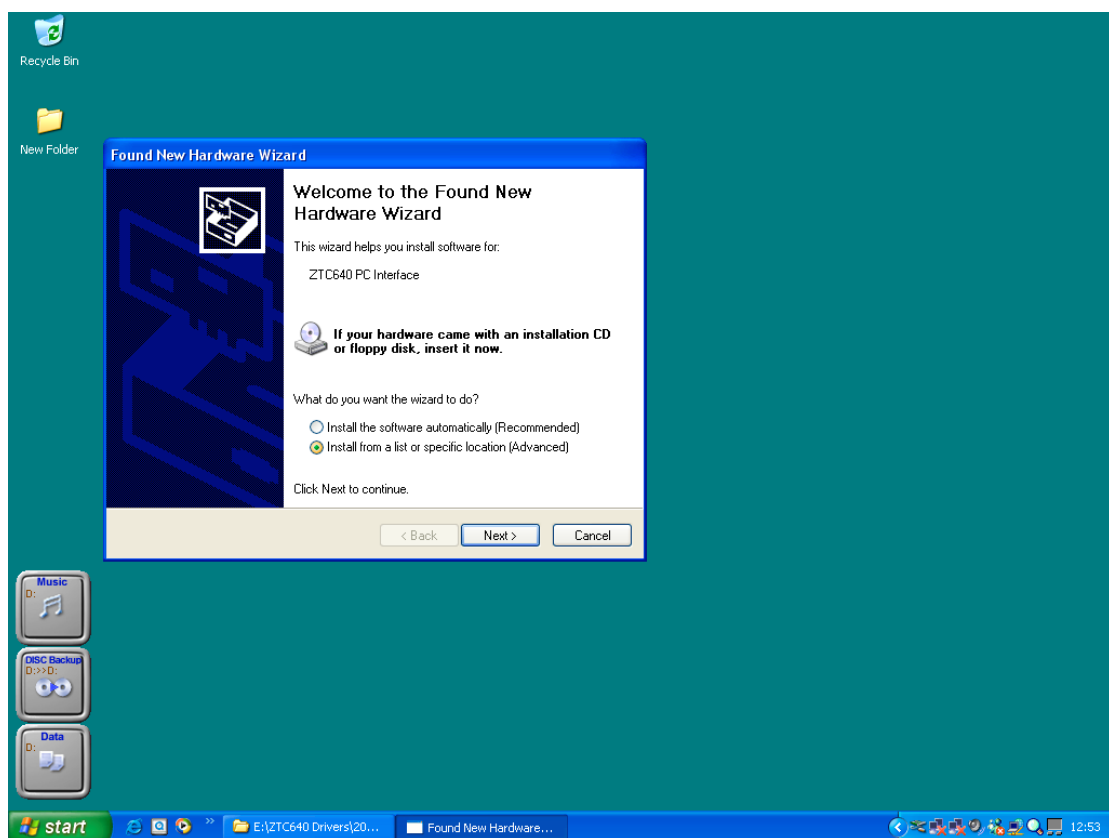


Windows XP installation

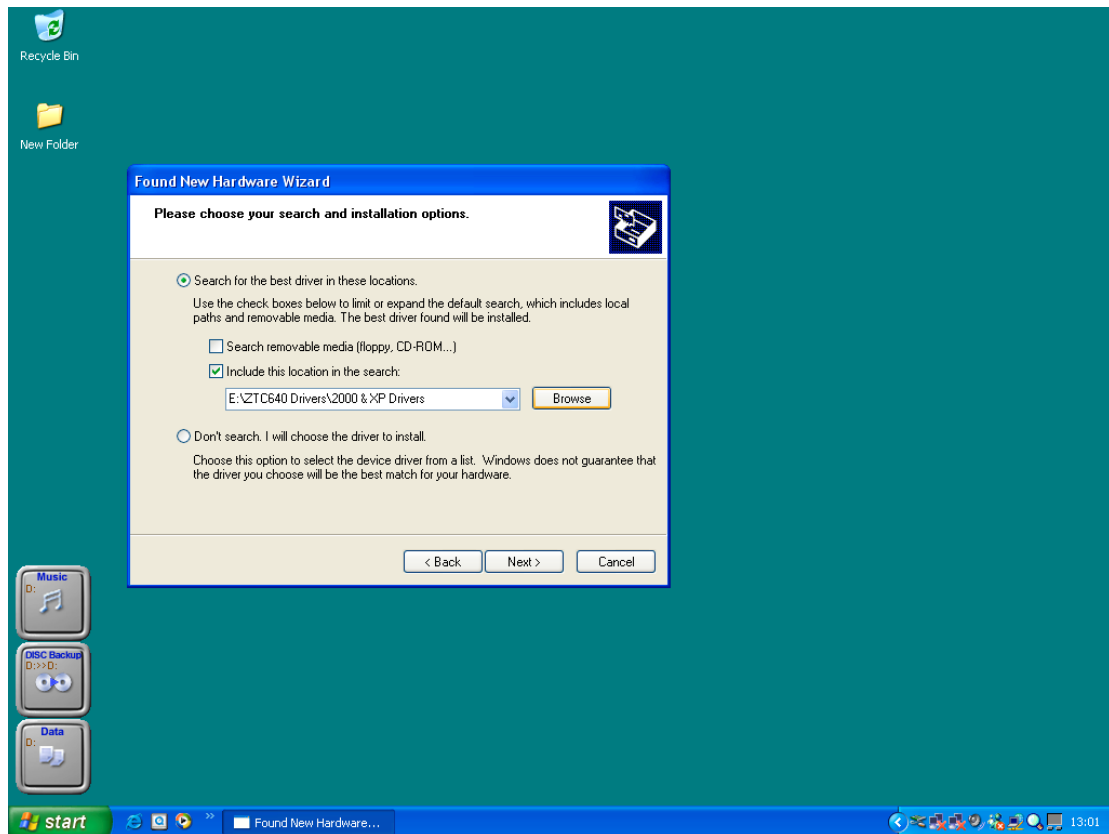
The following screen shots show the steps for installing the drivers required by the ZTC640. It is quite a simple procedure which XP does guide you through.



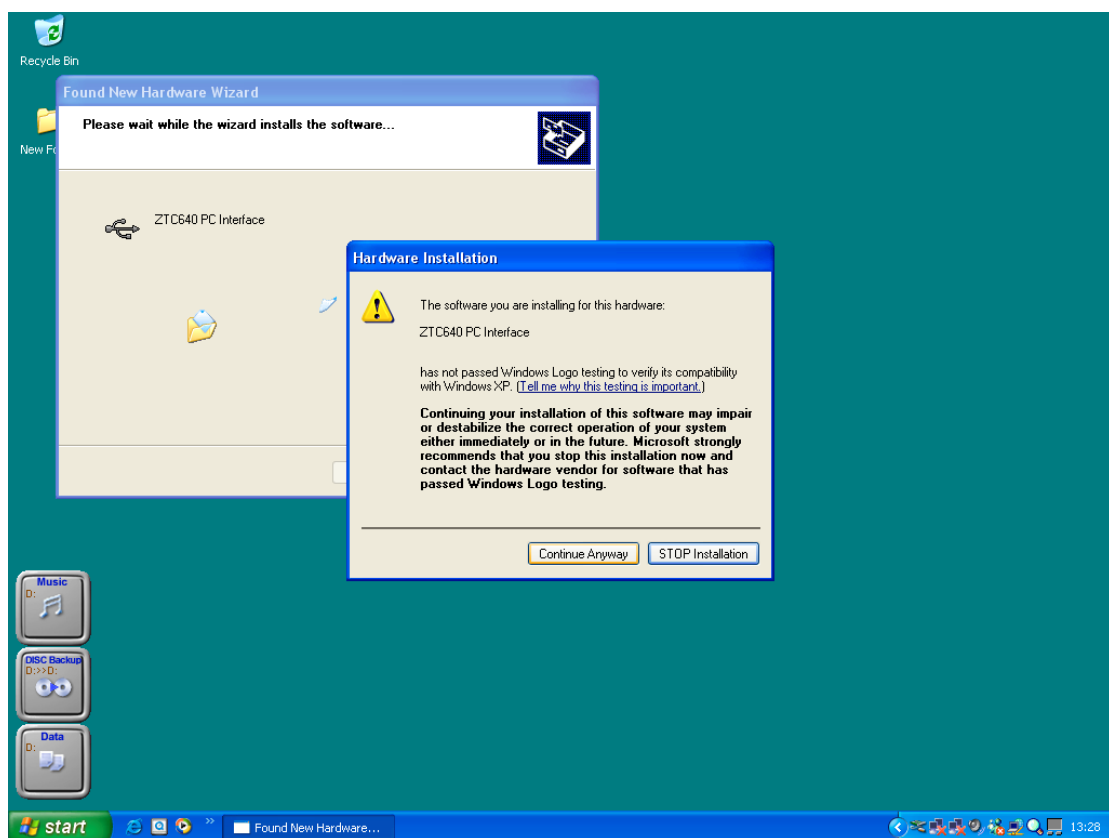
Firstly this screen should come up. Now XP might take control and automatically install the driver without asking for any help. Otherwise the following screens may be shown.



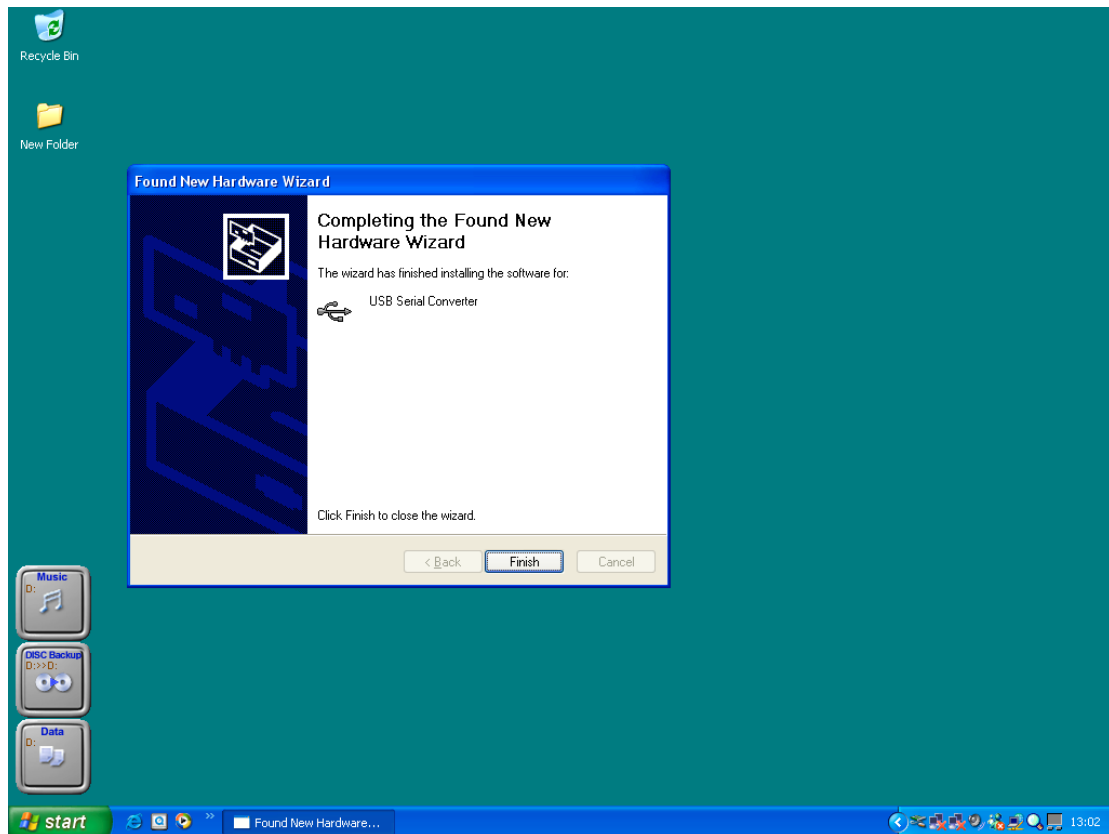
Make sure you select the option to install from a list or specific location



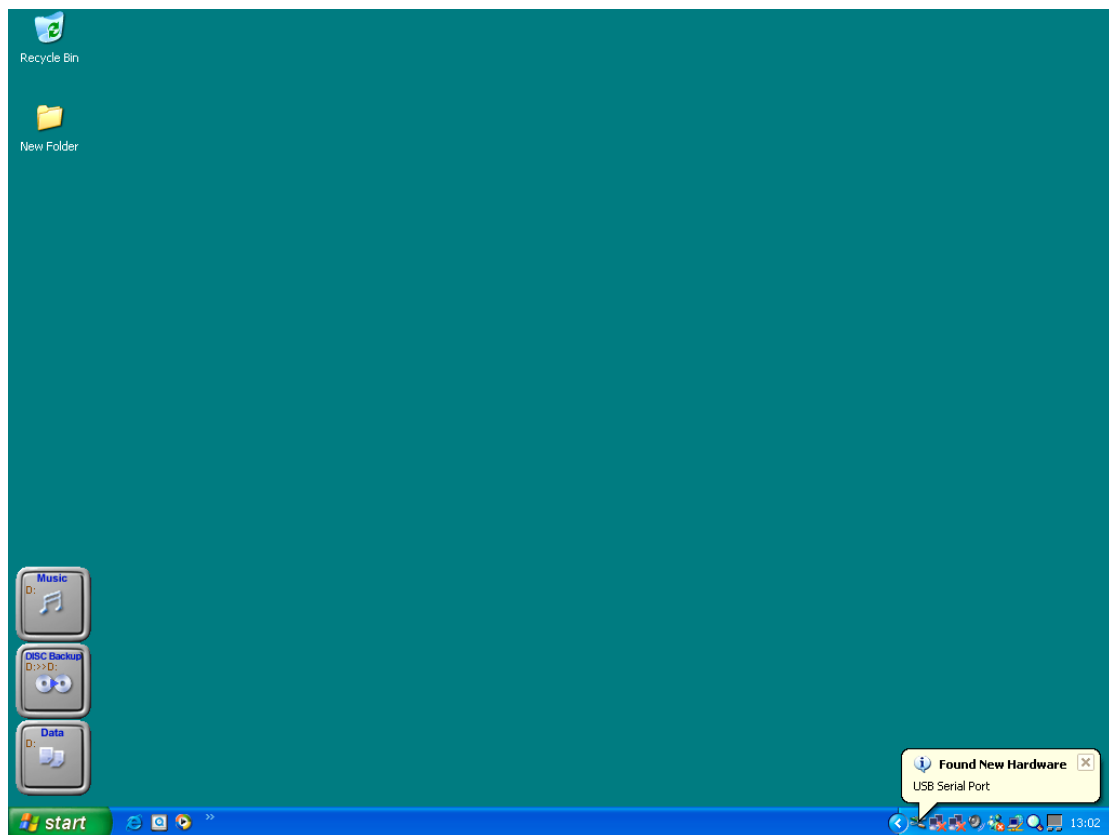
Browse your computer and find the CDROM drive. The rest of the path is as shown above. When found the Next button will be enabled and just press this to continue.



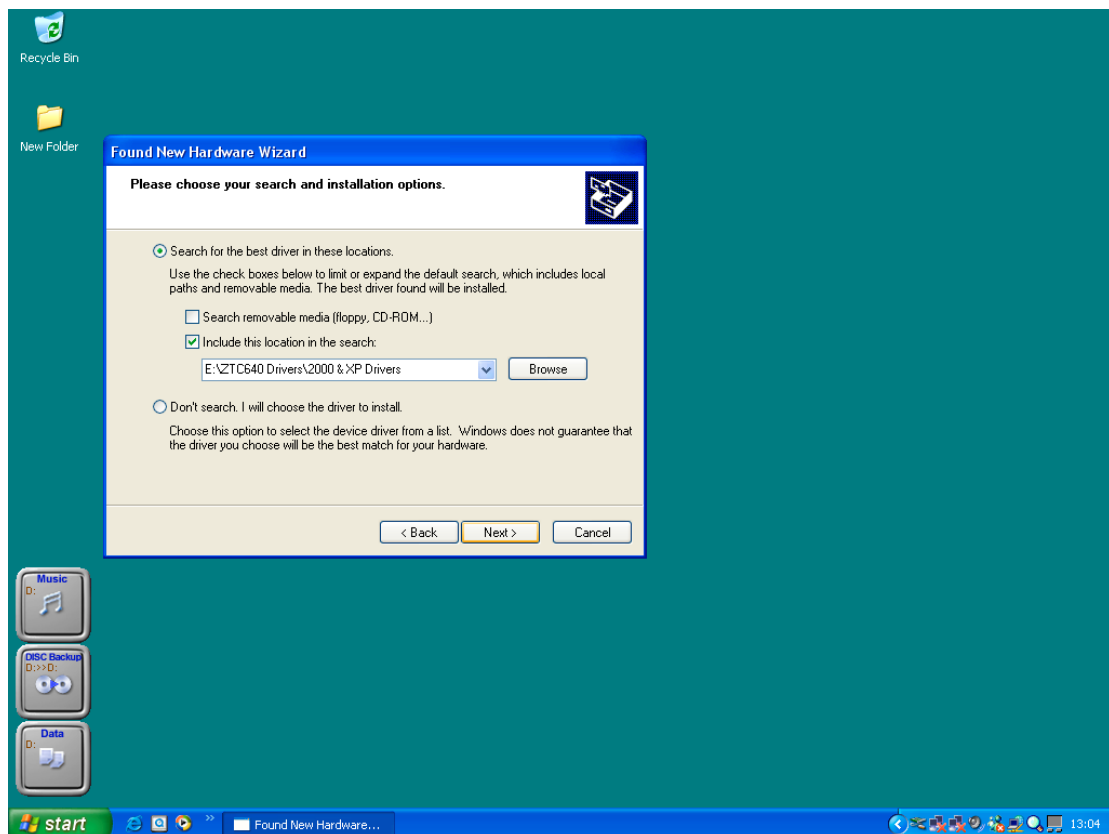
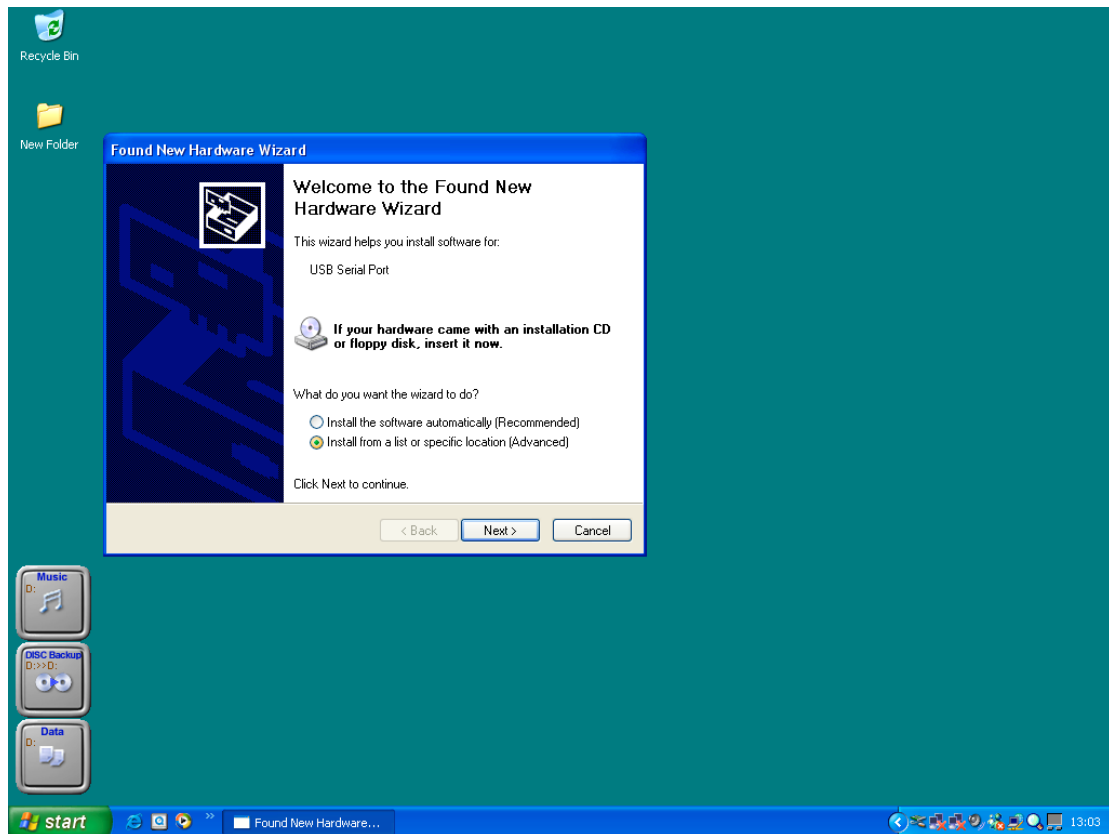
You may get the above displayed. Press the 'Continue Anyway' button.



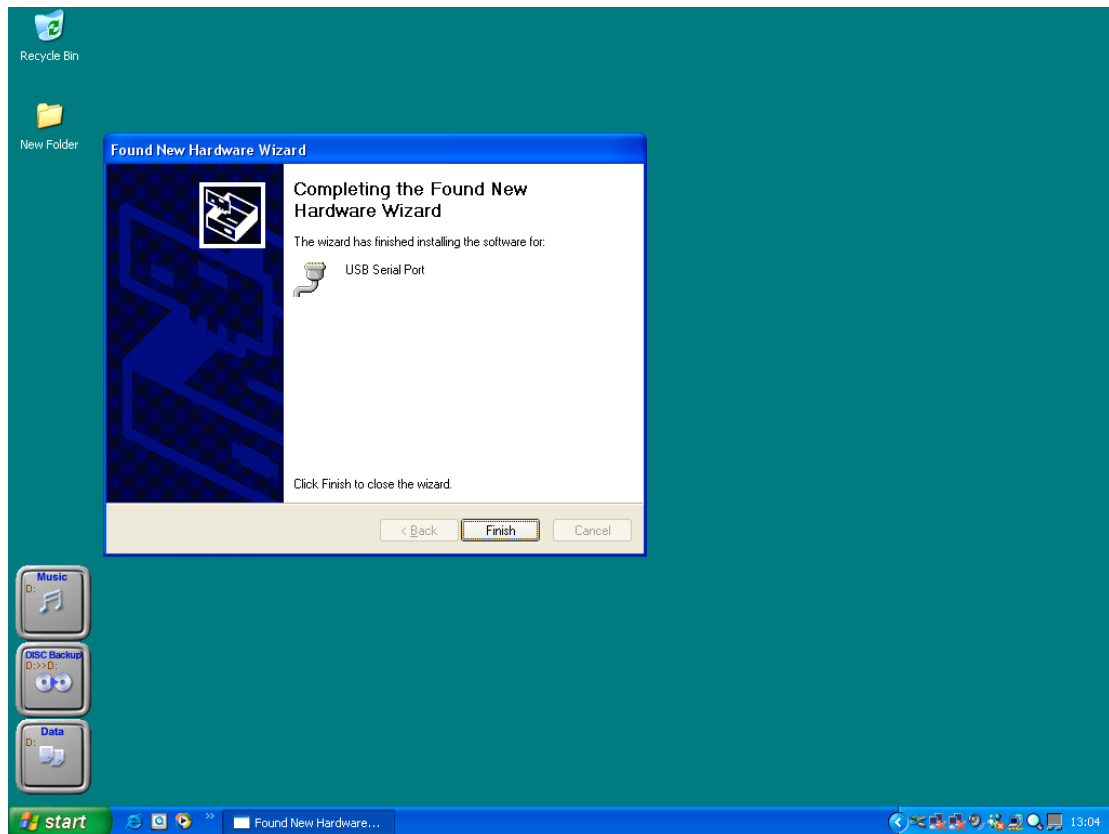
This will confirm that the driver has been successfully installed.



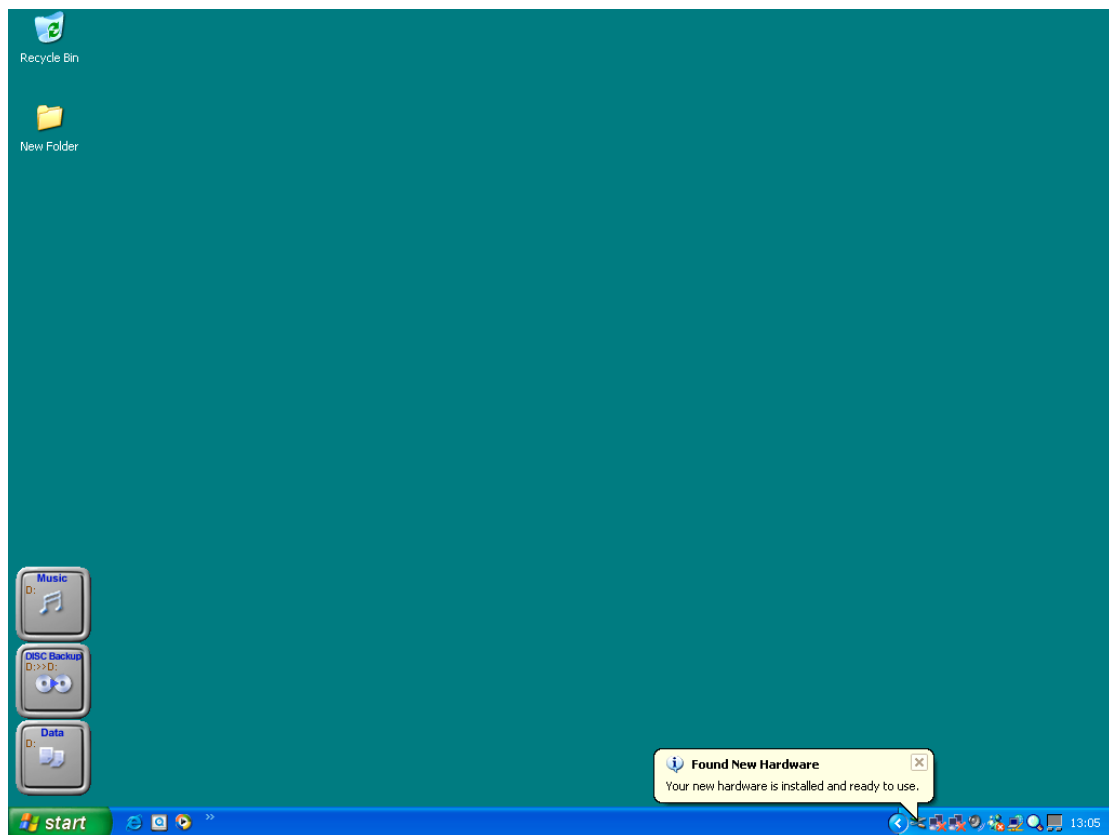
Next a second device will be found by XP and you should see the above. The procedure for installing this device is identical to that just undertaken.



Press the 'Browse' button and follow the path through to the CDROM drive. You are looking for the ZTC640Drivers folder. In this you will find another folder labelled 2000&XP Drivers. Select this folder and you should be able to select this path.

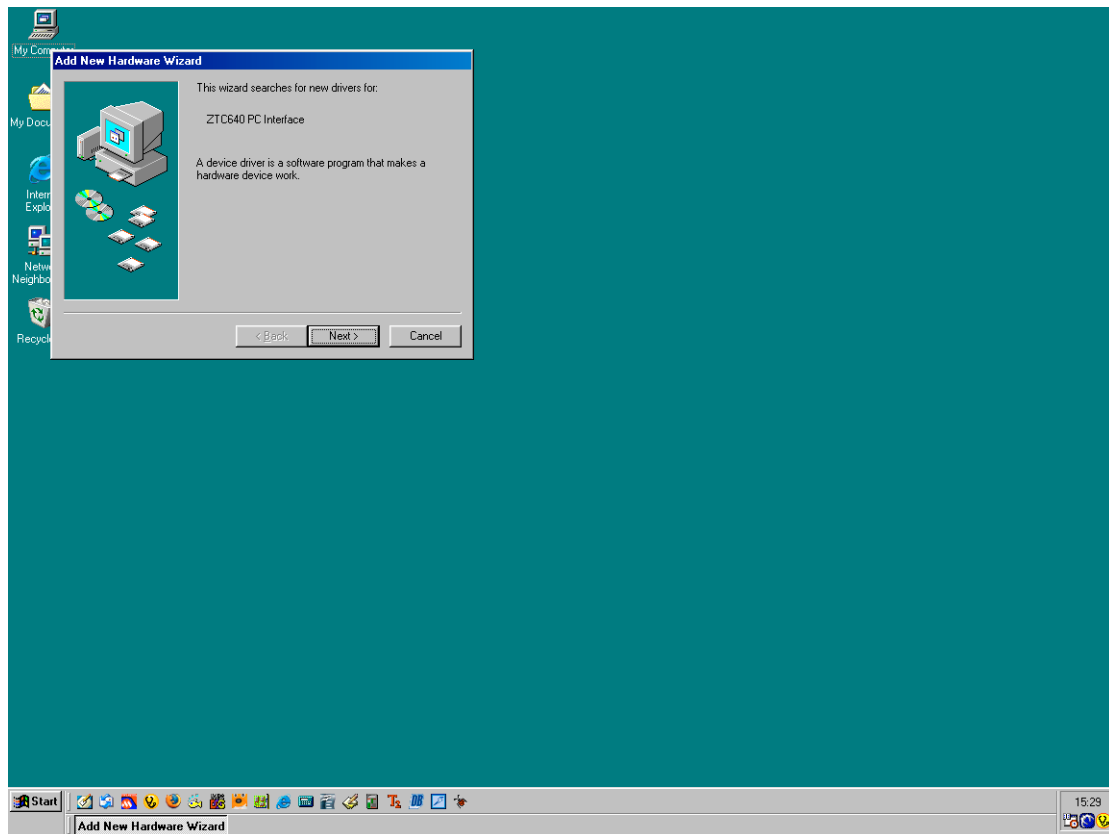


Once this happens the above screen will be displayed to show job done. Press Finish

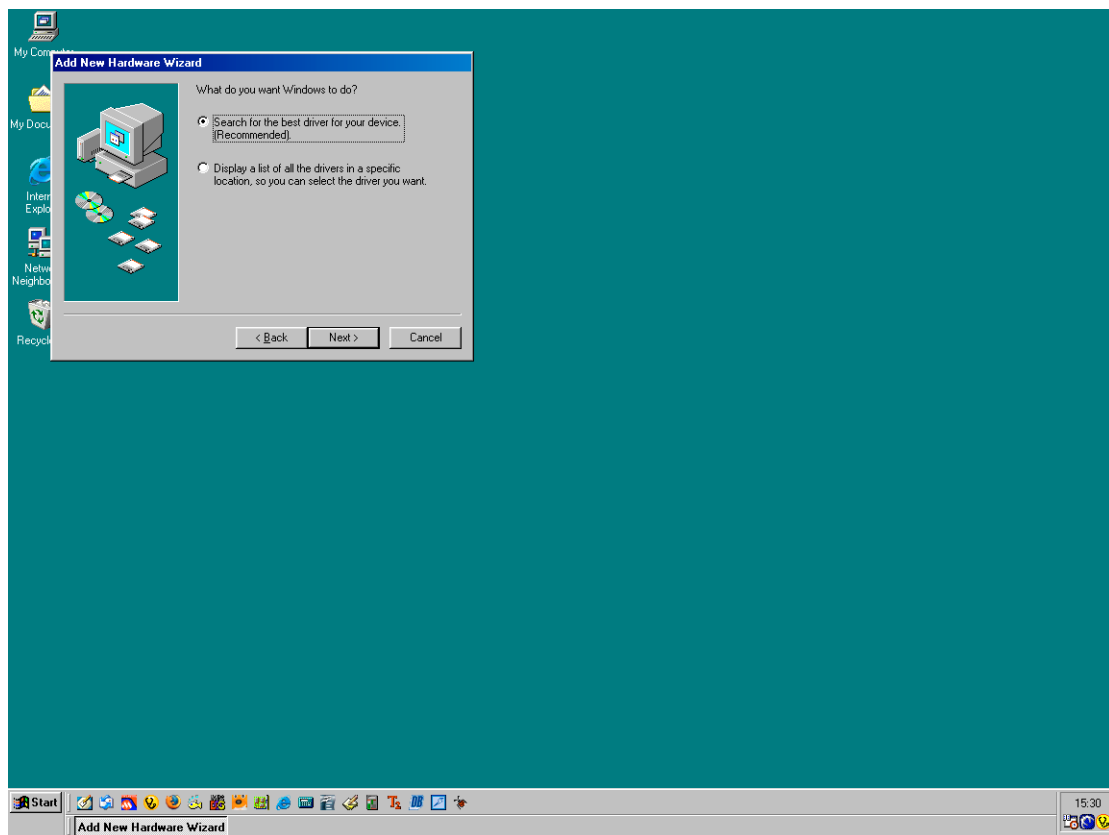


The above screen indicates successful installation of the drivers and completion of the job. Well done.

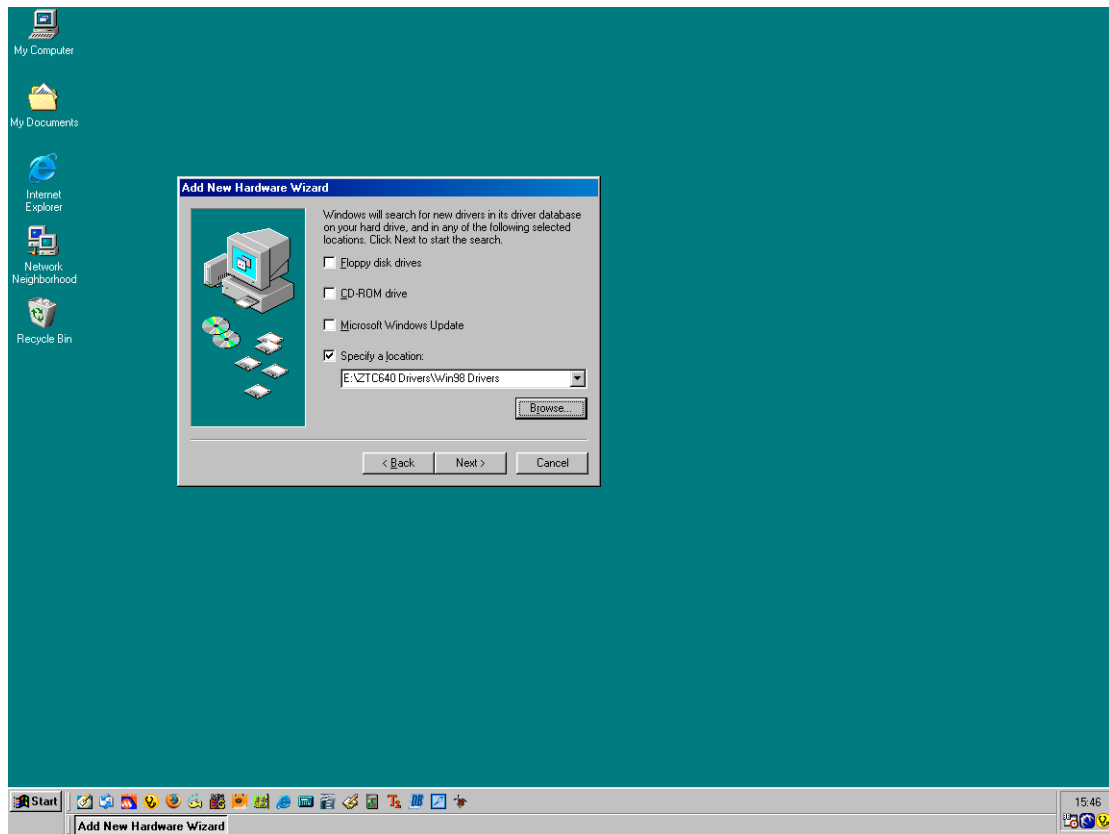
Windows 98 installation



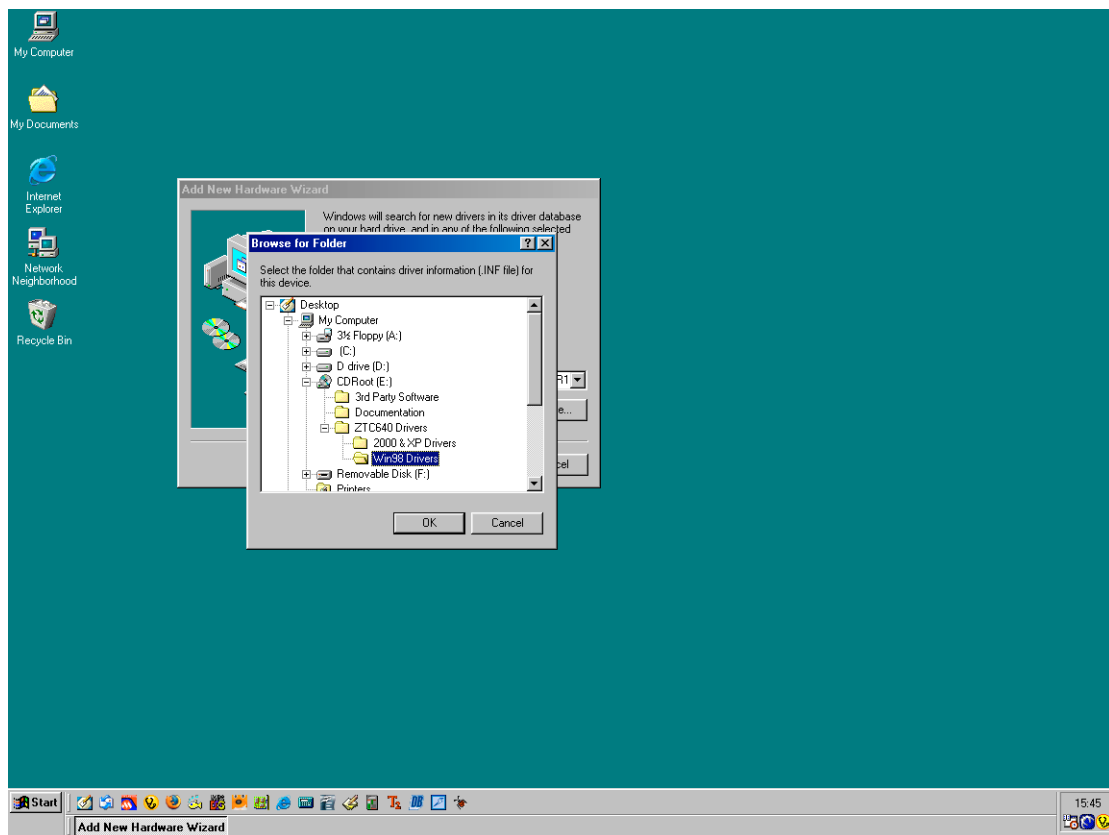
Click next



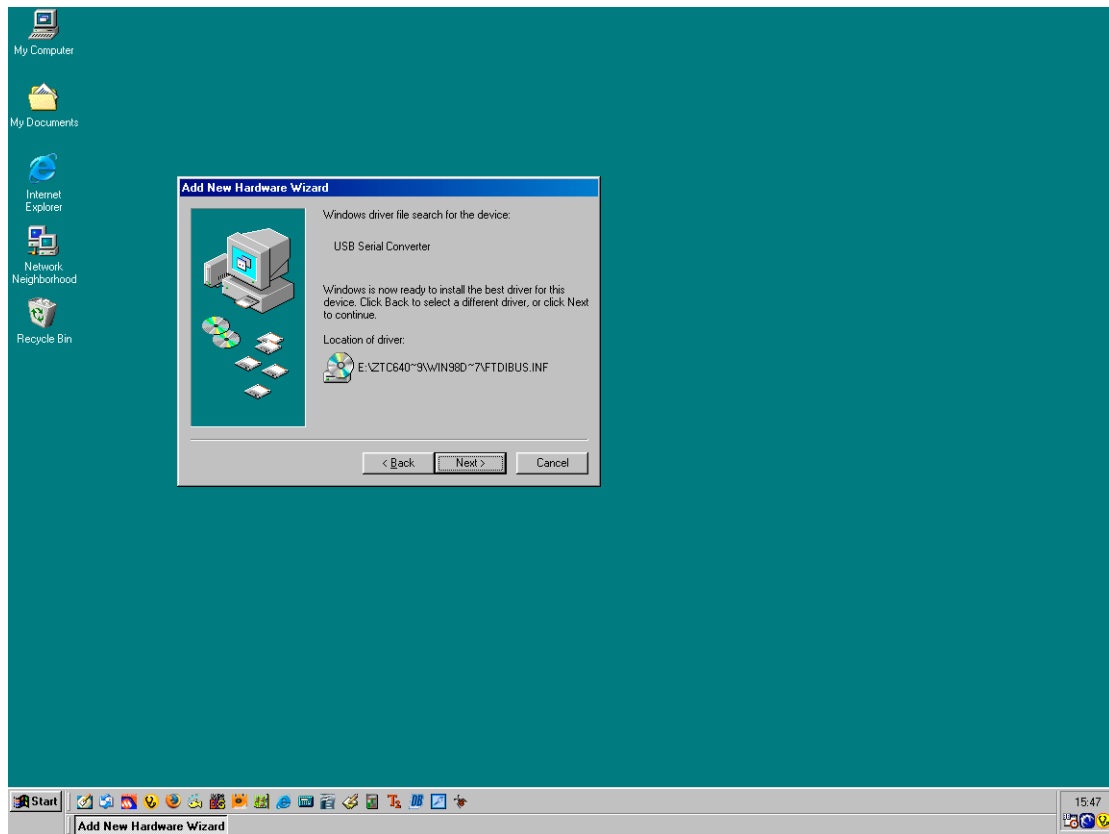
Click next



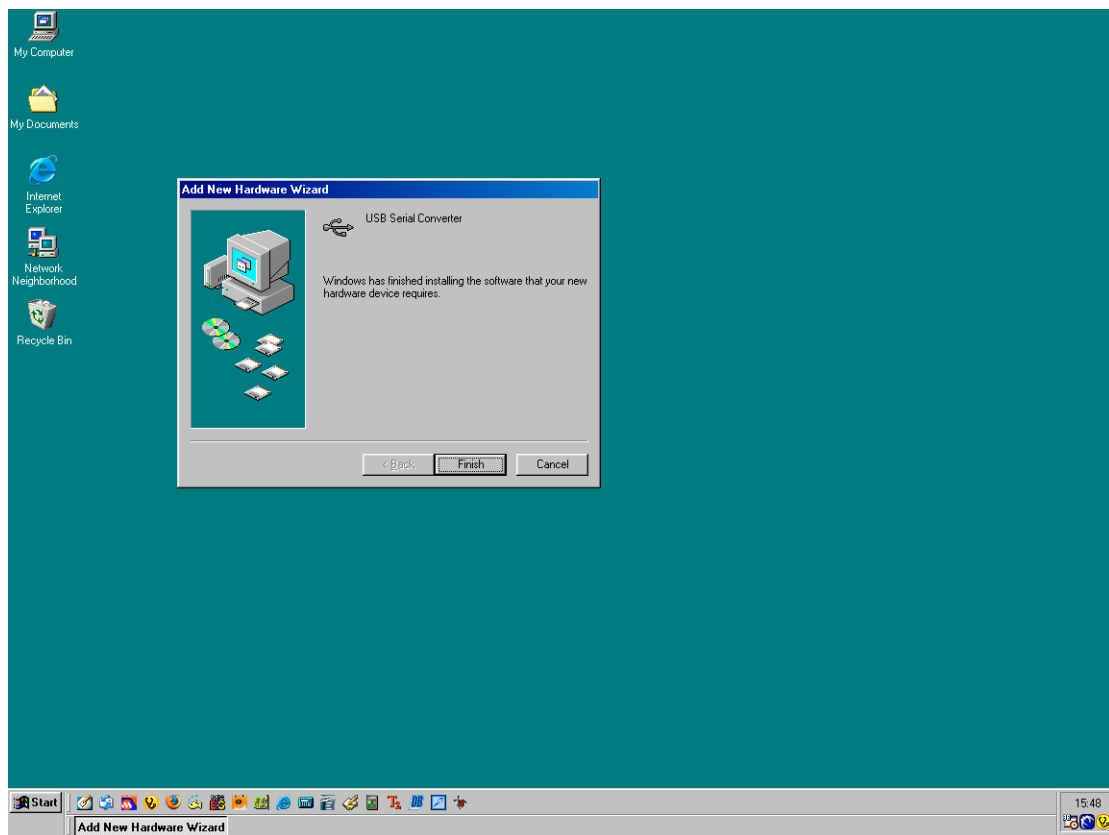
Click the browse button



You require the CDROM disk. Browse the directory of the CD as shown above. Once you have highlighted the Win98 Drivers folder press OK.



Click Next



Click Finish. The drivers are now installed.

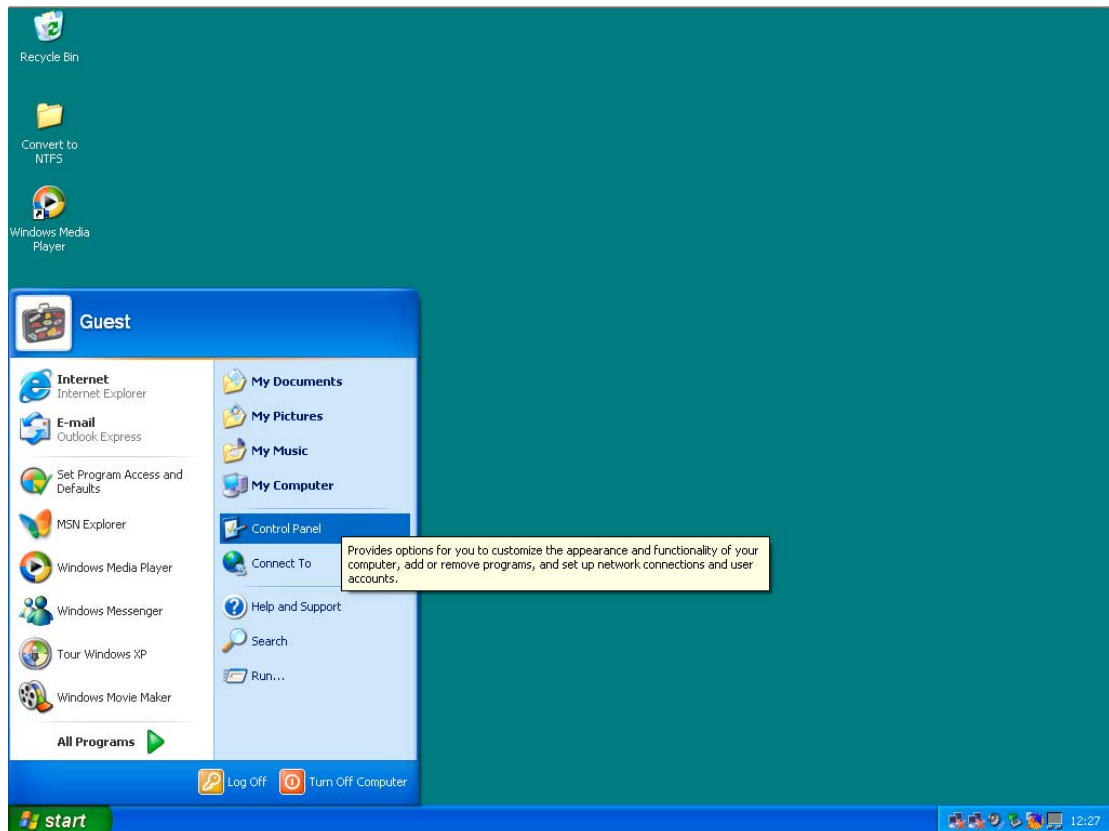
Using the ZTC640 PC Interface with your chosen software package.

There is some important information the user is required to know when using the ZTC640.

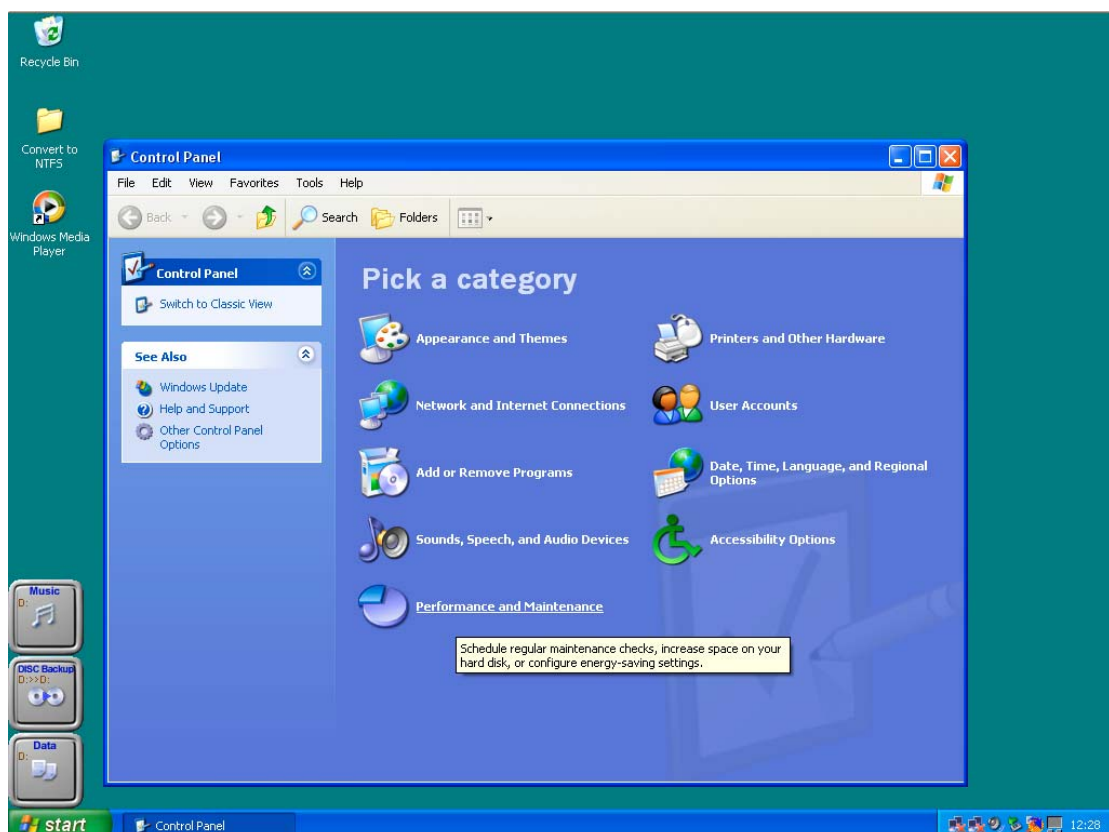
COM port : See below to find out the com port being used by the ZTC640
Baud rate : 19200
Flow control : None.

When using the ZTC640 with the many software packages available, one piece of information is vital. This is the COM port the ZTC640 is installed under. To find this information, follow the following guidelines.

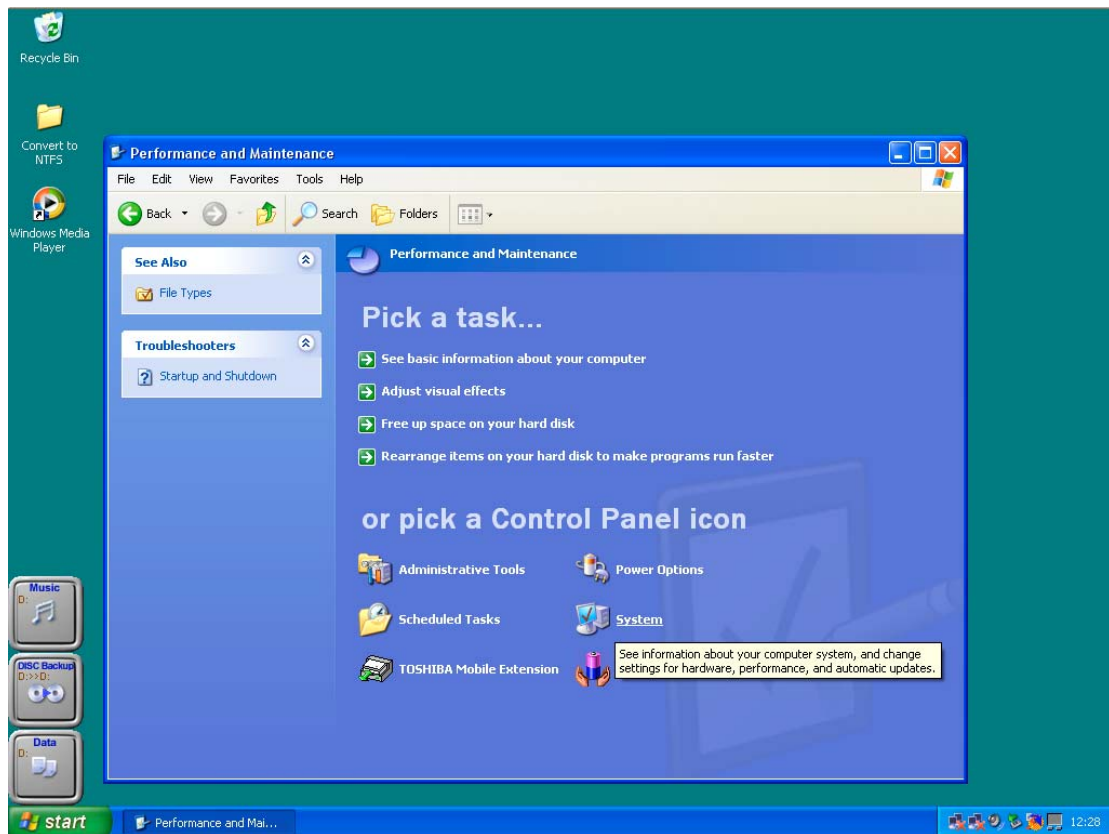
Finding the com port under XP



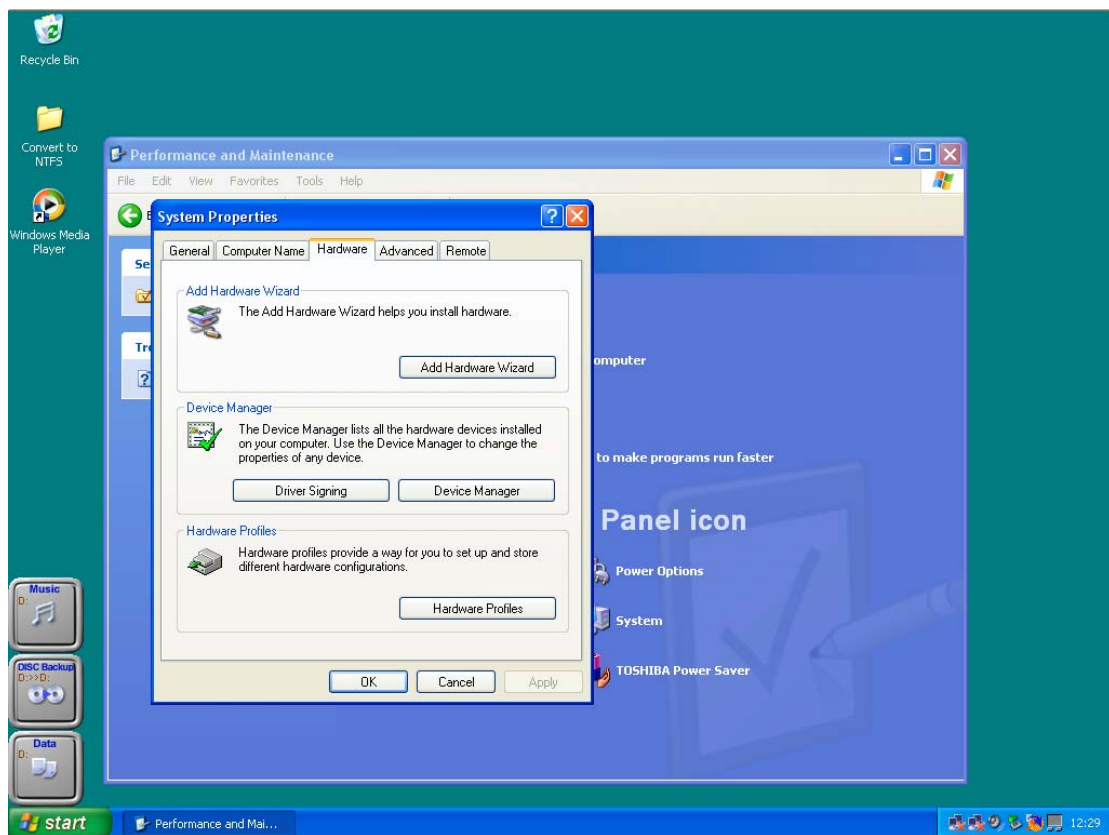
Select the Control Panel under the Start menu as shown above.



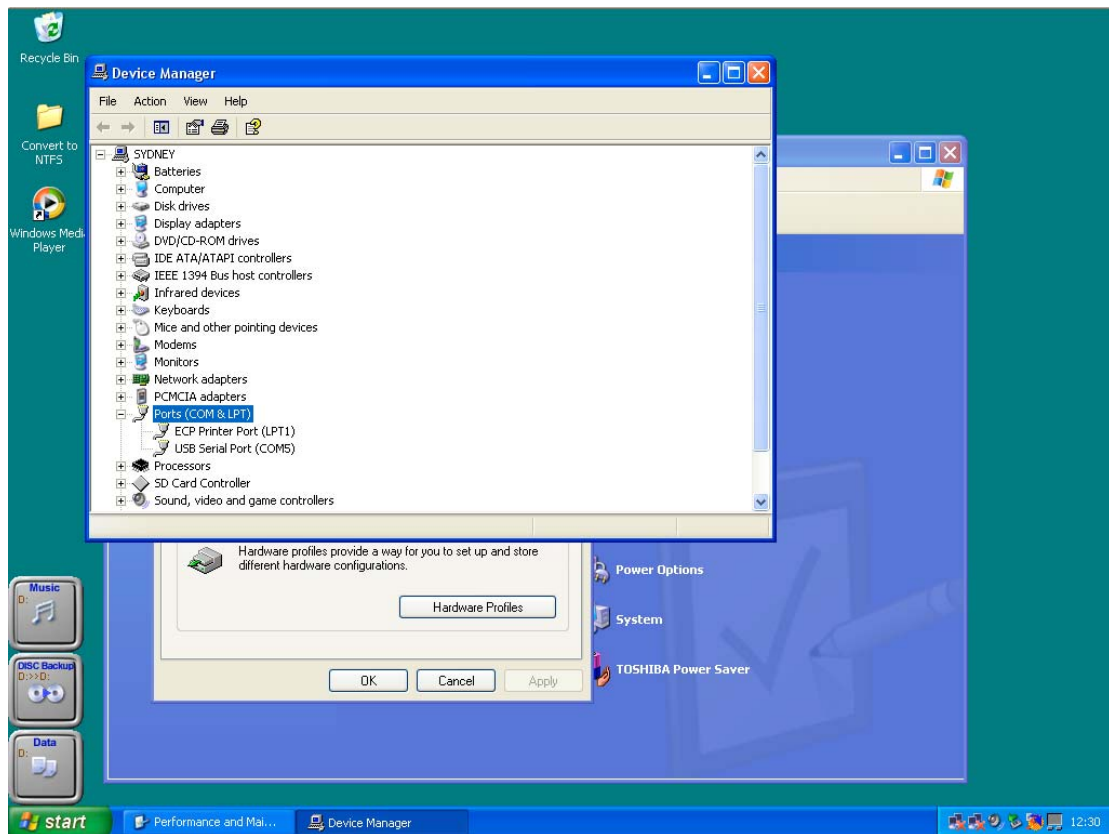
‘Single click’ the ‘Performance And Maintenance’ option as shown above.



Next 'single click' the 'System' option.

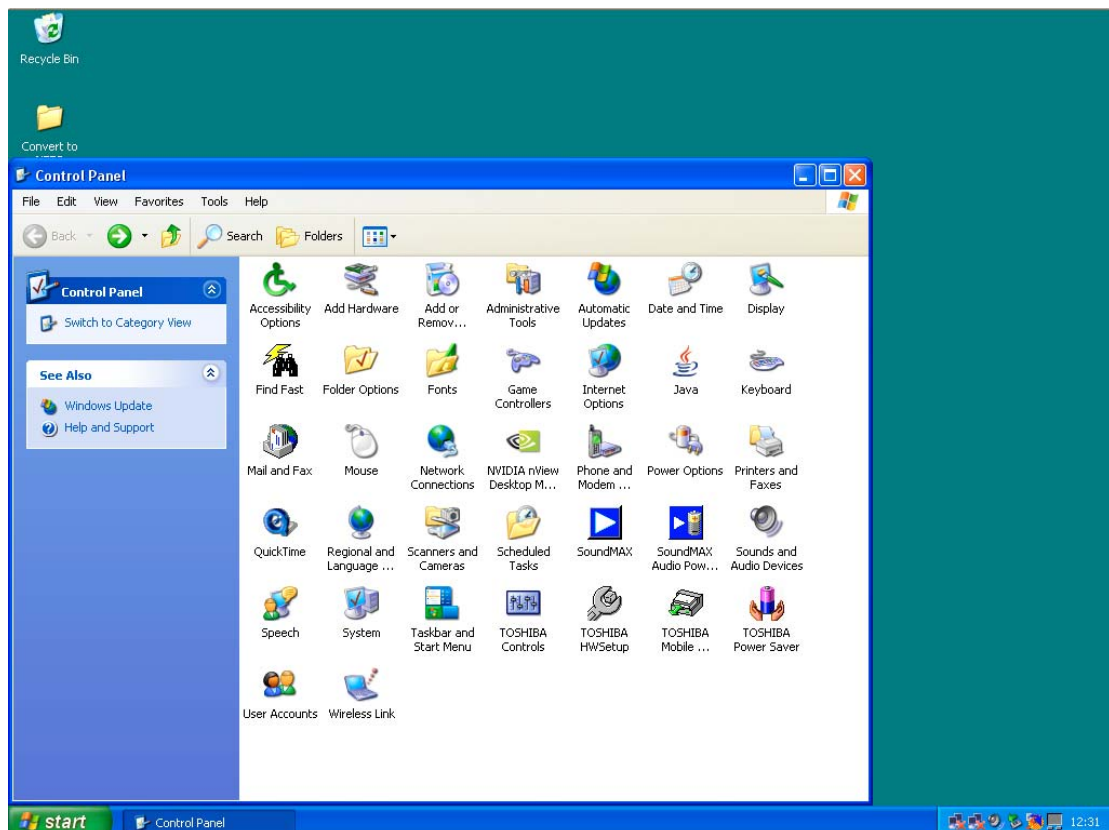


Under the Hardware tab – shown at the top of the window, 'single click' the 'Device Manager' button.

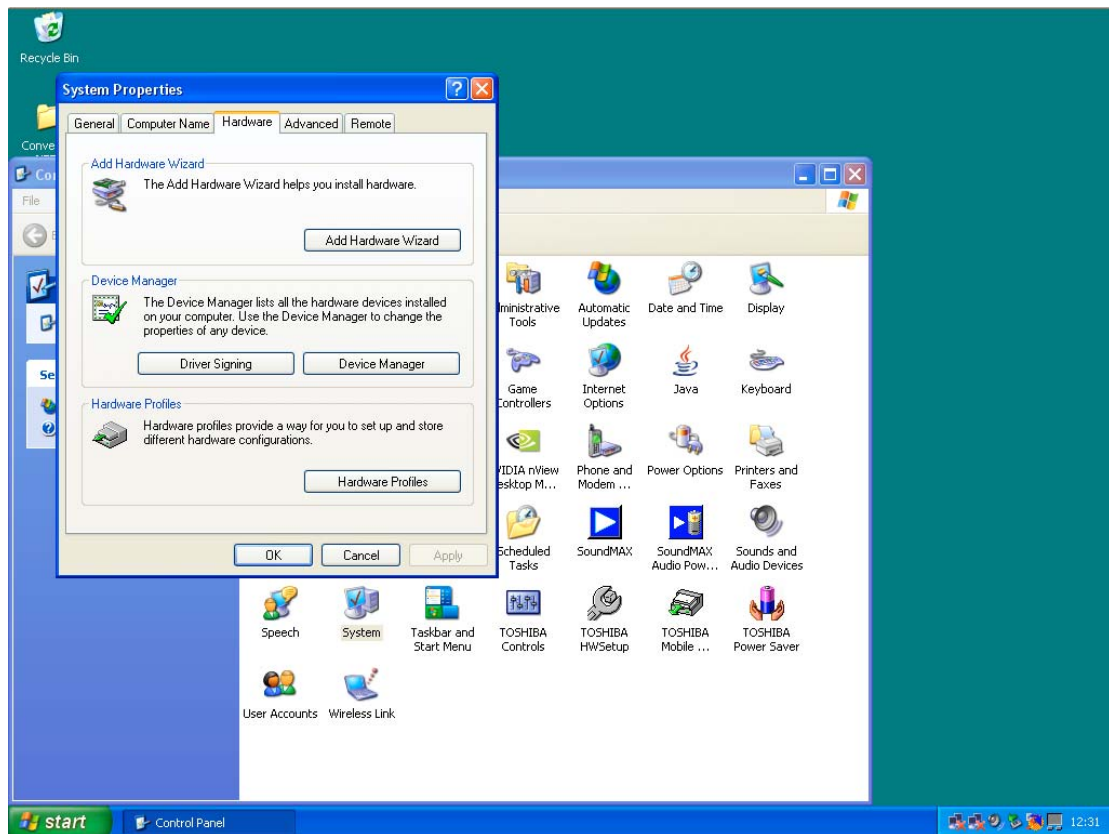


As can be seen from the above screenshot, a list appears. Highlighted is the relevant section. Pressing the + symbol next to it opens it up. This is the screenshot captured above. The USB Serial Port is now shown and in brackets the COM port number detailed. In this case it is COM5. This is the information that you will need to know.

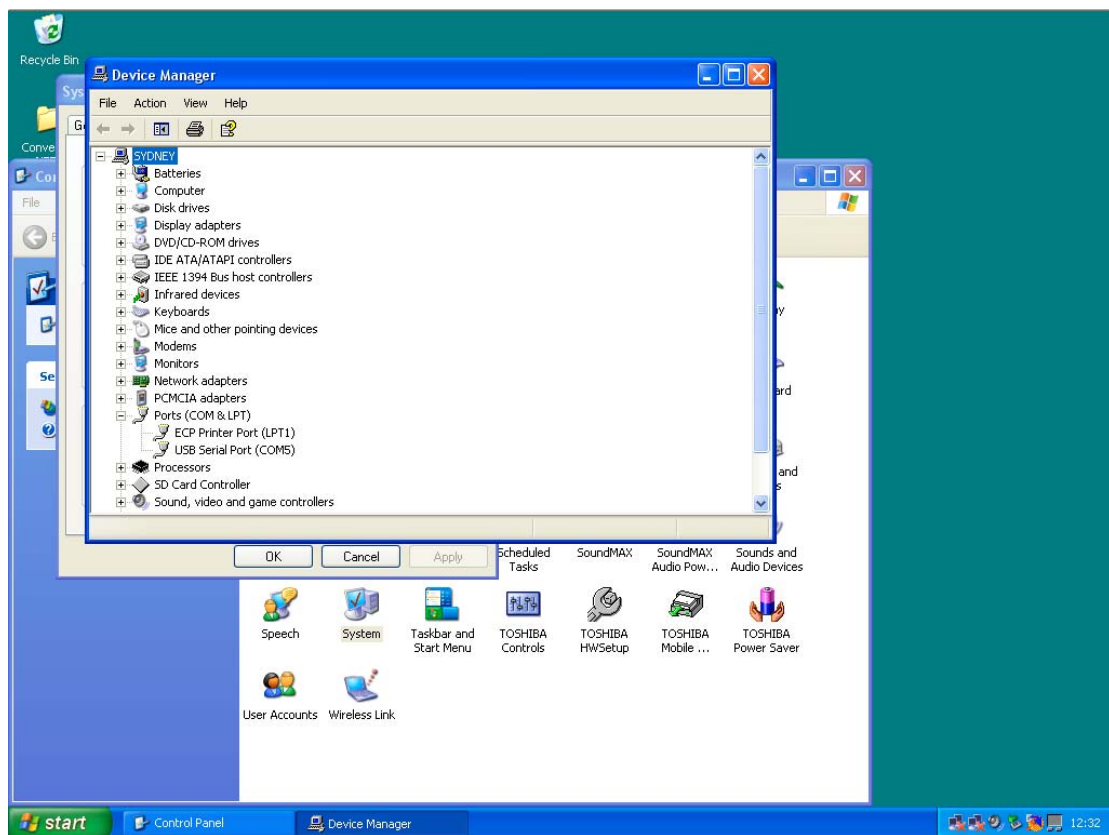
Some users under XP may have 'classic' view set up. If this is true for you, the following screenshots may be seen.



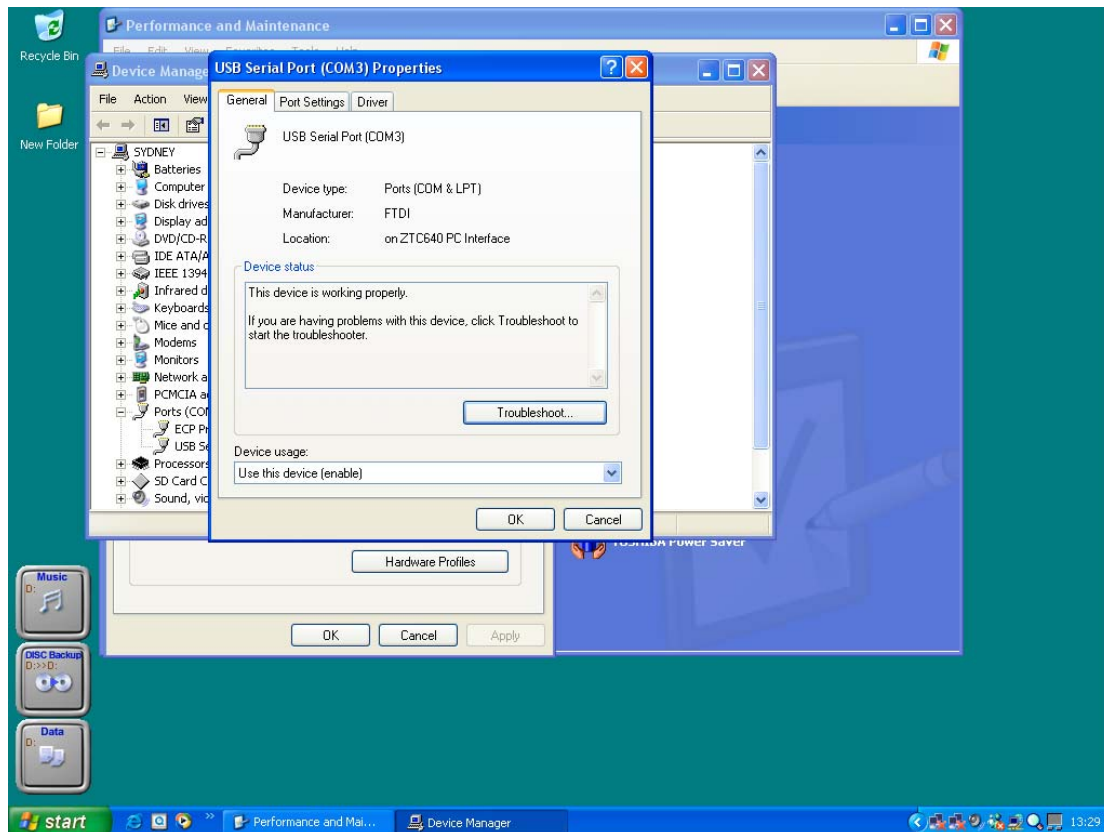
'Single click' the System icon.



‘Single click’ the ‘Device Manager’ option

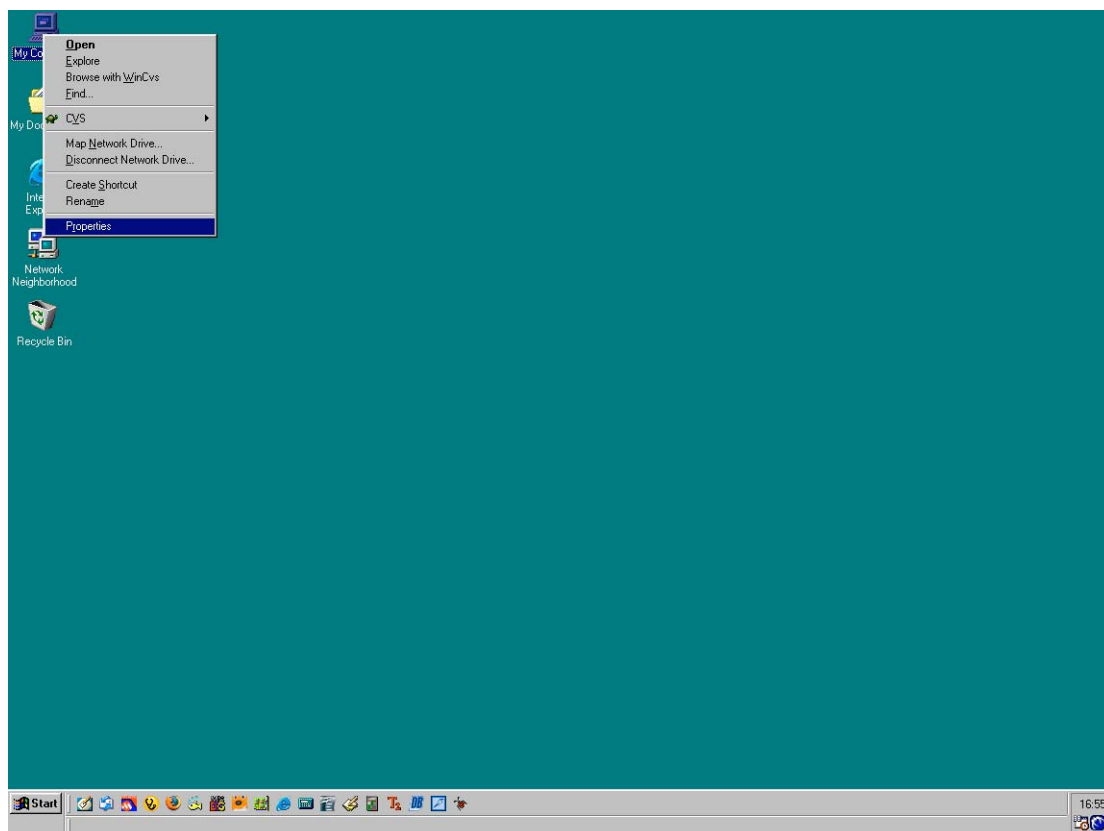


As can be seen from the above screenshot, a list appears. Highlighted is the relevant section. Pressing the + symbol next to it opens it up. This is the screenshot captured above. The USB Serial Port is now shown and in brackets the COM port number detailed. In this case it is COM5. This is the information that you will need to know.

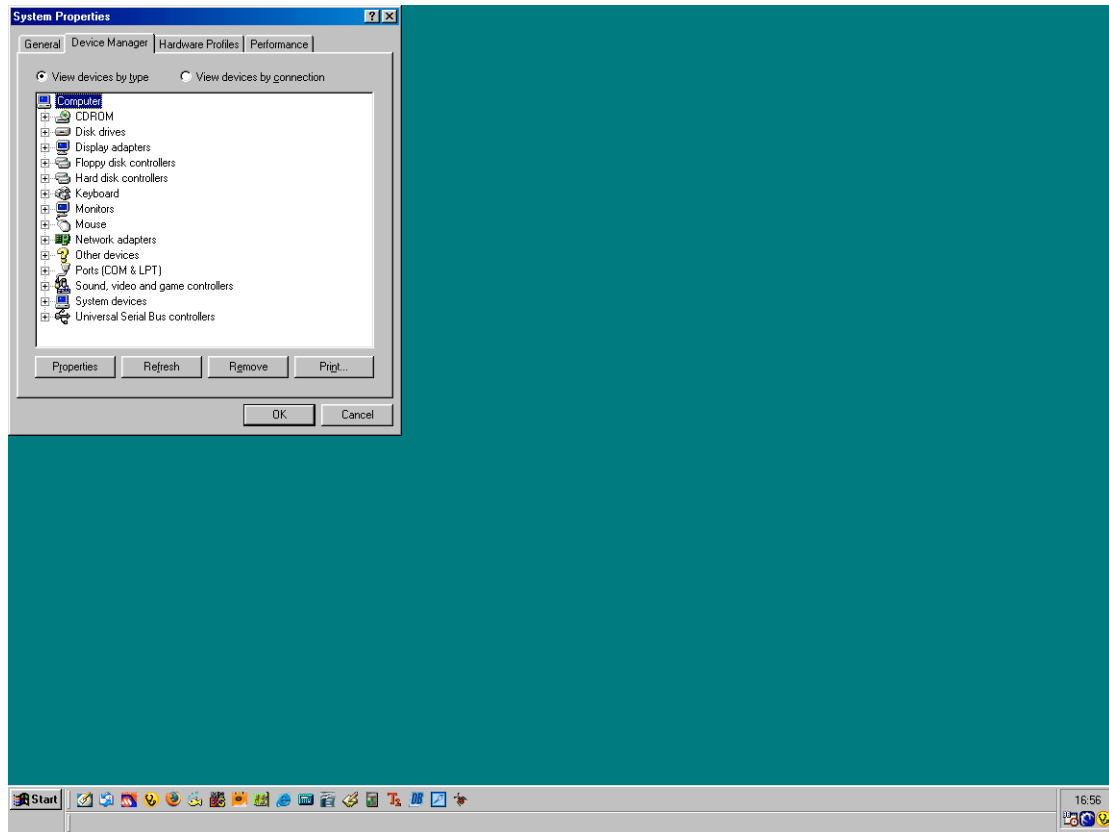


If you have more than one USB port connected because of other hardware you have plugged in. You can 'double click' on the usb port detail. This will show information on that port. Above is the information you should expect to see for a ZTC640 device.

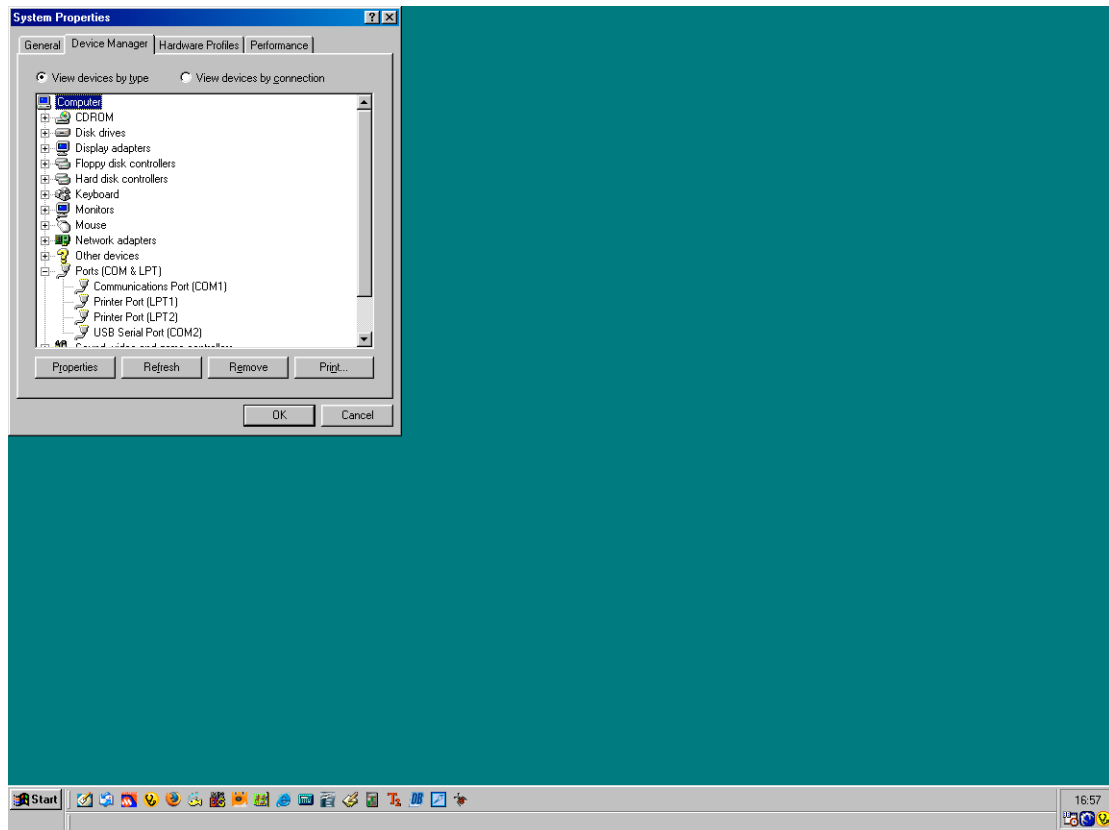
Finding the com port under Windows 98



Right click on the My Computer icon and select properties



Under the Device Manager tab you should see a list similar to the above screenshot.



Clicking the + next to Ports(COM & LPT) should drop down a sub list. Under here you can see the USB Serial Port(COM2). It is the COM2 port that is the important bit of information to note down.